



SHORT SYNOPSIS: A seemingly normal day takes a significant turn in this intimate glimpse into the life of a young woman struggling to make ends meet in Los Angeles.

MEDIUM SYNOPSIS: Even on a normal day, life can take you for a ride. Rosie is a young woman working as a maid in Los Angeles. She's struggling to make ends meet, survive a volatile relationship, and just get through the day. On this particular day, she slowly realizes that things may be about to take a significant turn.

A quiet, intimate piece, ROSIE is a character study on every woman, any woman.

LONG SYNOPSIS: Even on a normal day, life can take you for a ride. Rosie is a young woman working as a maid in Los Angeles. She's struggling to make ends meet, survive a volatile relationship, and just get through the day. On this particular day, she slowly realizes that things may be about to take a significant turn.

We join Rosie as she travels from one world to another, from her world on the poverty line to the luxurious world where she works cleaning homes. As she works, she realizes something might be different today, something big might be about to change her life forever.

A quiet, intimate piece, ROSIE is a character study on every woman, any woman.

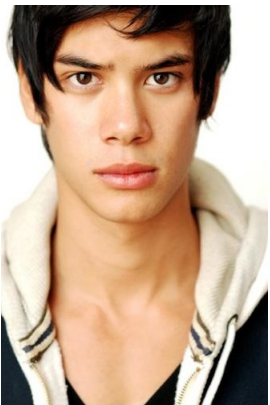
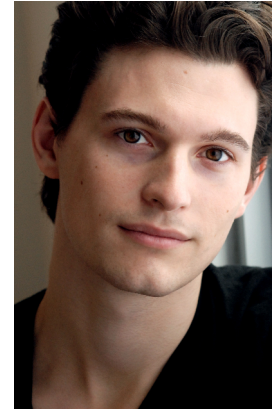


LESLIE-ANNE HUFF, executive producer,
writer, cast

Leslie-Anne Huff was born and raised in Los Angeles, CA. She began her acting career at the age of 5 in television commercials. She took a break from acting to attend The University of California at Berkeley. After graduating with honors, she returned to Los Angeles to work. Credits include *CSI:NY*, *Bones*, *The Middle*, *NCIS*, *Chuck*, and *Days of Our Lives*. *Rosie* is Leslie-Anne's first short as writer-producer.

BRYAN DECHART, director

Bryan Dechart is a graduate of New York University's Tisch School of the Arts. Credits include ABC Family's *Jane By Design*, *Switched At Birth*, HBO's *True Blood*, and recently released features *Dakota's Summer and Commencement*. Sony Pictures apocalyptic thriller, *The Remaining*, will be in theaters Fall 2014. Aside from acting, he explores photography, woodworking and gardening.



BEN LEVIN, cast

Ben Levin is an actor/musician from New York City, now living in Los Angeles. He is a graduate of Tisch School of the Arts. Recent film credits include *ADMISSION*, dir Paul Weitz, and *SLEEPWALK WITH ME*, dir Mike Birbiglia. He was also a series regular on *AS THE WORLD TURNS*. Ben is currently working on writing and creating sketch comedy.



ALBERTO ALVARENGA, co-producer, editor

Alberto Alvarenga found his passion for editing while an undergraduate at UC Berkeley. While taking a course in ethnographic film, Alberto discovered a passion for sculpting narrative and tone in the editing room from raw footage. He moved back to his home town of Los Angeles, where he got his start as an assistant editor on an independent horror feature *The Thompsons* (2012) before working full-time as an independent video editor on everything from narrative shorts and music videos to web content and corporate work.

MAX LANDRY, composer

Max Landry is a 24 year-old music producer based in Detroit, Michigan. He comes from a long line of musicians and recently graduated from Berklee College of Music, in Boston. Max has extensive experience producing for artists in the hip hop, pop, top-40 genres, and for film, television and commercials.



ABOUT THE PRODUCTION

Rosie is the first short film from writer Leslie-Anne Huff. Living and working in downtown Los Angeles, *Rosie*'s story is inspired by the women she meets and works with.

The film was shot entirely in downtown Los Angeles with no budget. After the film was completed, only \$120 was spent out of pocket.

Rosie is the product of a collaboration between artists and friends interested in telling a young woman's story who could be anyone's friend, daughter, neighbor.