



CREW

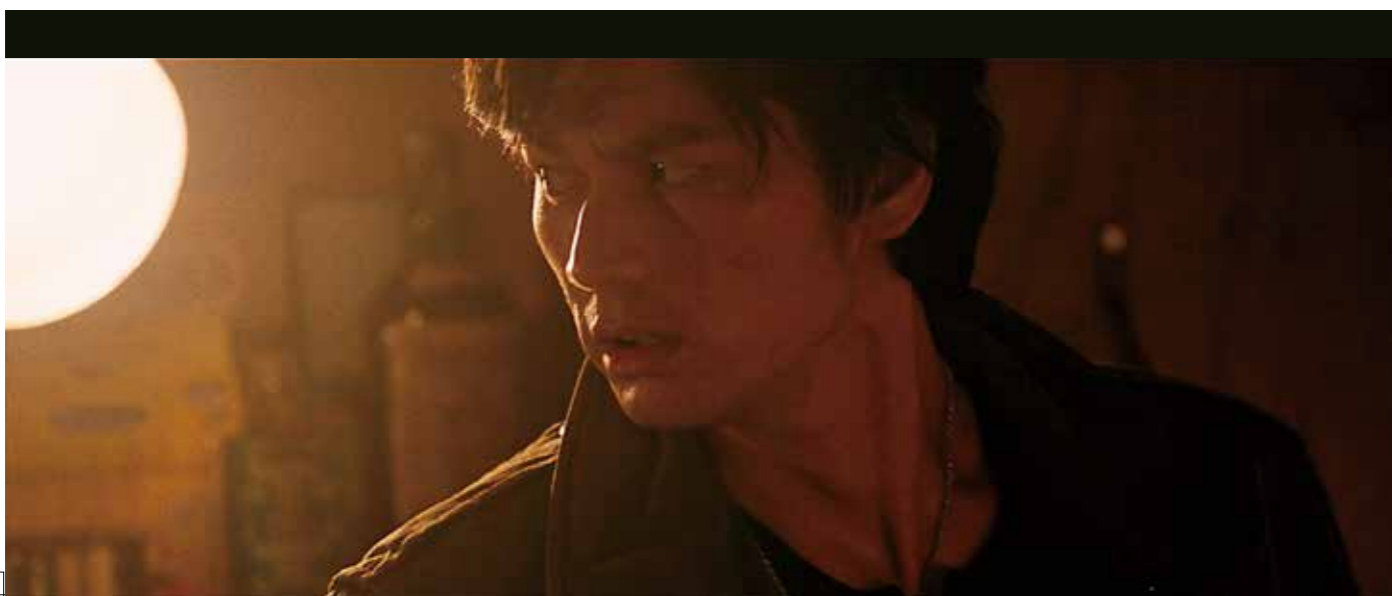
Writer, Director, and Editor: KOBAYASHI Katsuto
 KOBAYASHI Kenji
 Co-Writer TSUKINOSE Riko
 Cinematography: KUROISHI Nobuhiro
 Lighting: MATSUMURA Shiro
 Sound: HARASHINAI Toshihiko
 Production Design: OGIWARA Asako
 Composer: MAEGUCHI Wataru
 Executive Producer: KOBAYASHI Kenji
 Producers: KITAMURA Keiko
 SHIMBO Toshiki
 Production Company: JungleWalk Co.,Ltd

CAST

FUJIMOTO Ryo as MAKIBA Go
 SAKURAI Yuki as HISAKA Kei
 IKEUCHI Mansaku as SATO Masahiko
 AZUMA Mikihisa as SATO Naoya
 MIYAKAWA Ichirota as SATO Hideki
 MURAKAMI Shoji as MURATA Kazuo
 KISHI Asuka as SETO Kumiko
 YAMAGUCHI Karin as SATO Noriko
 YAMAMOTO Yoko as MAKIBA Sanae
 YAMAMOTO Gaku as SATO Zenichiro
 MAEDA Gin as SATO Yujiro

Contact

JungleWalk Co.,Ltd
 Address: Casatres 1F, 2-51-34 Sangenjaya, Setagaya-ku, Tokyo, 154-0024, Japan
 Tel: +81-3-5432-6398 FAX: +81-3-5432-6389
 Email: contact@junglewalk.co.jp
 Attention: SHIMBO Toshiki
 2016 / Japan / 121min / Color / 1:2.35 / DCP 5.1ch / Japanese



The ransom — the legendary blue diamond



WHERE FLORENCE SLEEPS

A KOBAYASHI BROTHERS FILM



Synopsis

Hideki Sato, heir to a family-run chemical industries company, is abducted, and the ransom is the “Tear of Florence”, a diamond long thought to be lost. Yet the current president of the company, Zenichiro Sato—Hideki’s father—refuses to give into the demand, willing to sacrifice his own son’s life.

Zenichiro’s secretary, Goh Makiba, is stunned. In fact, he is the one who has kidnapped Hideki in an attempt to regain the “Tear of Florence”, which he knows was behind an incident 25 years ago in which his mother was driven to suicide, sacrificed for the sake of this very company.

As the deadline for the ransom nears, Zenichiro collapses from a relapse of his ailment. Zenichiro’s younger brother and the company’s vice president, Yujiro, sees an opportunity to take over control of the company and begins orchestrating a coup.

Goh’s accomplice, Kei—a co-worker at the company—grows concerned that Goh is about to become a murderer. When she visits Sanae Makiba, the woman who raised Goh, she learns a surprising truth about what happened 25 years ago. And when Goh is told about that truth, he finally understands everything and decides to take drastic action.

Production Notes

Kenji Kobayashi, who serves as the film’s executive producer and co-director, planned this film as the first part of a two-film project: *Where Florence Sleeps* takes part in Japan, while the sequel, *The Tear of Florence* (working title), will be set in the U.S.

Where Florence Sleeps tells the story of various characters surrounding a fictional diamond called the “Tear of Florence”, which disappeared 70 years ago in the chaos of World War II. The Japanese part of the saga is a corporate thriller involving a kidnapping in an attempt to dig up the mysterious diamond, while the American part will be a road movie following an old war veteran who is suddenly sent the diamond that supposedly belonged to him. Seeing one film will surely entice viewers into seeing the other, helping to expand the audience beyond Japan and into the world.

Director’s Statement

It’s often noted in the global business world that Japanese corporations are run somewhat differently. But such things as lifetime employment and promotions by seniority have become less prominent as Japanese companies switch to merit-based systems that emphasize ability over all else. Yet for many Japanese people, working at a company remains a central part of their identity.

For them, a company is a beloved collective whose members share a common destiny. After graduating from school, these people immediately join a company, and even after retiring at age 60, their love for the company not only remains unchanged, it actually grows. They love the company, just as they love their family and hometown. There are many people who still feel this way. That is why the presidents and CEOs of top Japanese companies are expected to demonstrate both dignity and mercy befitting a domain lord from the feudal era, and why employees serve the company with a willingness to sacrifice themselves for its benefit.

When a negative legacy from the past surfaces to threaten this beloved company, what should one do? Is it justified to hide such a legacy, or would such an act be wrong?

Projecting the “company” onto Japanese society itself, it may well be that this is a question that we all carry within ourselves.

Director’s Biography

KOBAYASHI Katsuto

Established a TV production company in 1989 and has directed over 200 works. He also founded a theater company with his younger brother Kenji and has written over ten original plays in addition to directing. In 2005, he began focusing on film production with the production company JungleWalk. He co-directed *The Neighbor* in 2009 with his brother.

KOBAYASHI Kenji

After performing an actor with the theater company Haiyuza, he began aspiring to make films. He worked as an actor and producer with the theater company he founded with his older brother Katsuto. In 2000, he established a company called Ozma Produce. In 2004, he founded a film production company called JungleWalk, followed by JungleWalk USA in 2008. He co-directed *The Neighbor* with his brother in 2009. He also produced the film and self-distributed it nationwide in Japan.

