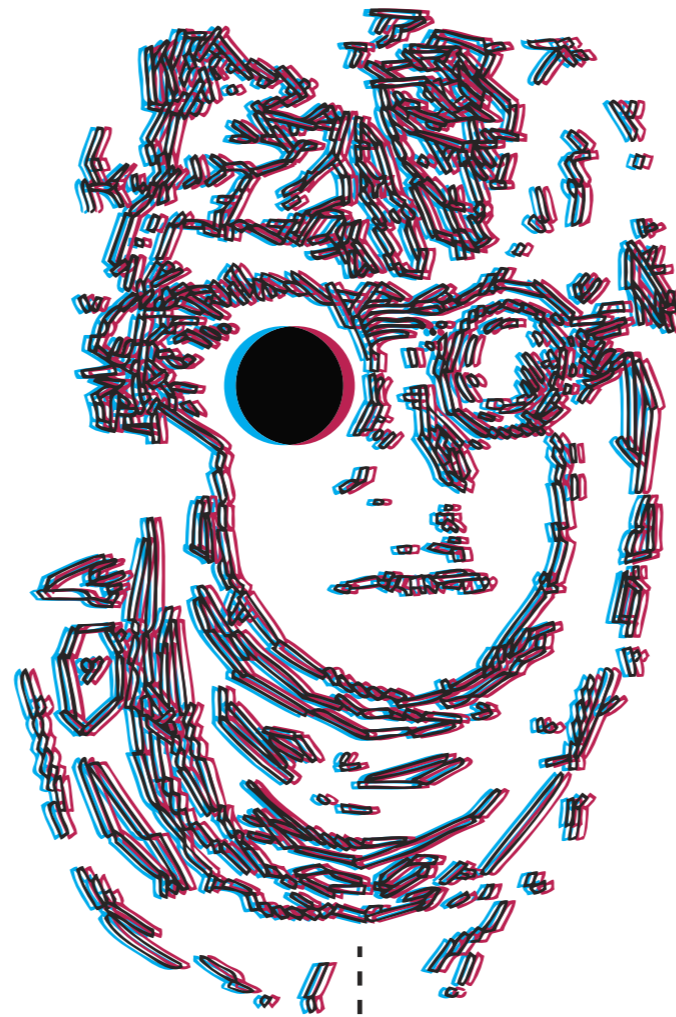


a film by Max Sherwood



NERVOUS

PERSON

SYNOPSIS

Nervous Person expresses how we feel inside when things go wrong on the outside. A man waits for someone at an increasingly strange public event. He grows anxious. The little man within his body struggles to maintain order as his nerves wreak havoc on his inner mechanics. The man panics. The little man begins to lose control.





DIRECTOR'S STATEMENT

Nervous Person expresses the tension between our public selves and our inward physical and emotional selves. It explores how tethered we are to these strange soft, mechanical bodies and how unaware we are of how they work. Or how we affect them.

The ideas in Nervous Person came to me in two short waves.

I was inspired to depict a nonsensical physiological stageplay while driving and stressed and listening to Lou Reed's "Andy's Chest." One verse describes a cartoonish involuntary physical transformation.

Weeks later, I was in Laganardia Airport. I absently watched a man drop his luggage and call out joyfully. A nearly identical man ran up and they hugged. A loop was closed in my mind. They were brothers. I'd told myself a story.

These ideas became one instantly in the airport lounge, a strange dark joke with an inevitable, sad punchline. We labored to make Nervous Person a dark comedy and a silent art film. And never one a satire of the other.



BIOGRAPHIES

MAX SHERWOOD Writer/Director

Max Sherwood draws influence from great silent cinema, pop films, art films and his work as a Property Master on feature films in New York. He works with directors and actors daily to workshop creative decisions and to support the vision of the story. Taking and leaving lessons from these experiences. He brought these visual inclinations and observations to Nervous Person. He was daydreaming about The Cabinet of Dr. Caligari and The Wild Bunch and Vertigo and Stalker while Prop Mastering The Place Beyond the Pines, Blue Valentine, Blood Ties, Frozen River and A Walk Among the Tombstones.

ROCCO GEORGE “Rocco” “Socco” and “Inside

Rocco has a strange and powerful star quality. He brings his unique perspective to life and art with a fascinating and too often overlooked grace. His understanding of humans is at once deeply personal and also observed from afar. And he’s really funny.

BIOGRAPHIES

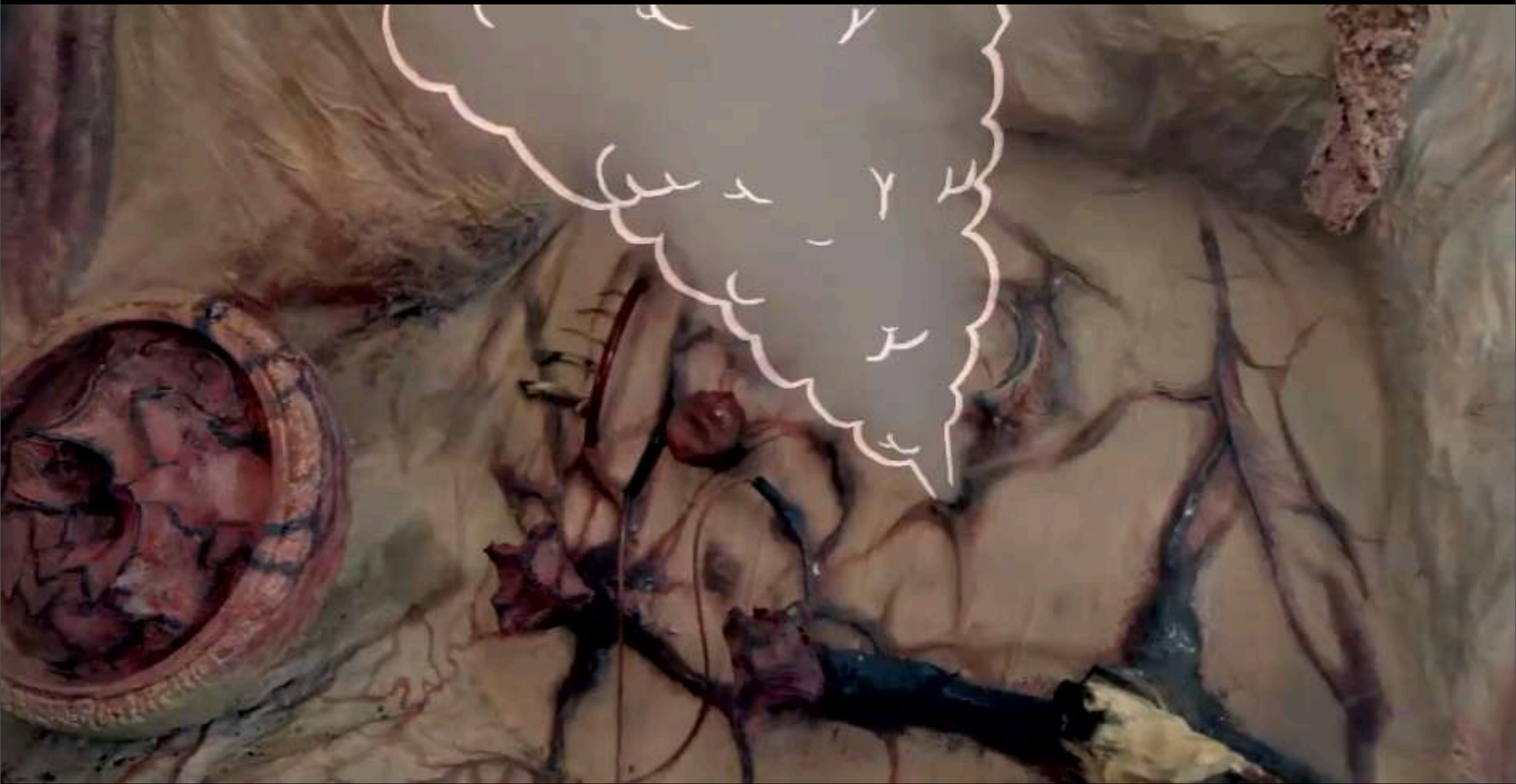
RICHARD PEETE Producer

Born and raised in Western New York, Richard Peete attended the Savannah College of Art and Design before moving to New York City to pursue a career in film. Since then he has worked as a Prop Master on many award winning films and Television series, including Blue Valentine, The Place Beyond the Pines, HBO's Girls and Sundance Grand Jury Prize winners Frozen River (2008) and Winter's Bone (2010). With extensive on set experience, Richard moved on to found Neighborhood Watch Films, producing short films, music videos and most recently, Jeremy Saulnier's second feature, Blue Ruin, currently in post-production.

MARSHALL JOHNSON Producer

Marshall Johnson was born and raised in and around Baltimore, Maryland. He attended NYU's Tisch School of the Arts where he learned that everyone else was beneath him. This prestigious degree set him up perfectly to be an unpaid intern on a low budget feature film, painting walls in an abandoned Brooklyn rectory. Marshall has now spent the past 10 years working as a location manager and production manager for feature films including The Place Beyond the Pines, Blue Valentine and A Late Quartet. Most recently, he founded Cowbird Films, producing and directing short films and music videos.





CAST

Rocco/Socco	ROCCO GEORGE
Inside Man	ROCCO GEORGE
Crying Twins	DEANNA DEVITO SAMANTHA DEVITO
Beer Bros	EURIDES CEPEDA RAMON CEPEDA
Football Dads	JOSEPH NUNZIATA VINCENT NUNZIATA
Football Girls	CHRISTINE NUNZIATA JESSICA NUNZIATA
Consoling Argentwins	BRIAN BEREZONSKY DEREK BEREZONSKY
Blonde Consoling Twins	LAURA JOHNS AMANDA JOHNS
Front Consoling Twins	GLEN APSELOFF STAN APSELOFF
Gooped Twins	JARED YOUNCE JUSTIN YOUNCE

CREW

Written and Directed by	MAX SHERWOOD	"INSIDE MAN" CREW	
Produced by	RICHARD PEETE	Costume Design	CORY BROWN
	MARSHALL JOHNSON	Gaffer	MIKE QUIGLEY
Director of Photography	RICHARD PEETE	Camera Operator	TIM ARNOLD
Editor	CHRISTIAN SIMMONS	Set Builders/ Puppeteers	JOHN GRACE
Music Composed & Arranged by	JOE HEFFERNAN		BRIAN RZEPKA
Production Designer	MAX SHERWOOD		ROI CYDULKIN
Art Director/Camera Operator	CORY BROWN		WILL SPITZ
Set Decoration	STEVEN ZERBE		PATRICK HEAD
Additional Photography by	SKIP TERPESTRA		JOANNA TILLMAN
Associate Producers	ALEX SOTO		JASMINE BALLOU
	JOAN & DONALD SHERWOOD		HARRISON FRALEY
	ANDREW SHERWOOD		BRANDON TONNER-CONNOLLY
	THE KNOTT FAMILY		WILL DOYLE
	THE SPECIALISTS LTD		AUDE CUENOD
	STEPHEN BEATRICE		
	WILL GEE		

CREW (CONT.)

Inside Painter/SFX/
Control Panel Fabricator

STEPHEN ZERBE

Painter/Carpenter/SFX/Makeup
Suit Airbrushing/Makeup Consultant

DANE MEHRINGER

MIKE FONTAINE

Scenic

KATE MCCANNEY

POV Mask

ANGELA CONANT

FX Testing

JONATHAN BUTT

PAUL STANKUS

DAVE BRENNER

TWINSBURG CREW

Production Coordinator

DANIELLE DUFF

Wardrobe Stylist

ANGELINE ZEIGLER

Set PAs

SEAMUS LEAHY

ILONA JUREK



NERVOUS PERSON

A SHORT FILM BY MAX SHERWOOD

a NEIGHBORHOOD WATCH FILMS production
neighborhoodwatchfilms.tv
info@neighborhoodwatch.tv