





COMMERCIAL FOR THE QUEEN OF MEATLOAF

[Narrative Short]

Running Time:

Directed By:

Written By:

Executive Produced By:

Produced By:

Production Company:

Edited by:

Cinematographer:

10 minutes

Dina Fiasconaro

Emilie Fendenzer

Leah Meyerhoff

Melodie Sisk

Fringe Films

Danielle Damico

Shannon Palmer



LOGLINE

In a surrealist 1950s commercial, a housewife prepares meatloaf for dinner. What emerges from the kitchen is “The Queen of Meatloaf” incarnate, who invades the homes of consumers and wreaks havoc on set.

SYNOPSIS

Rex returns home from work to find Marge in the kitchen, where she has been slaving all day over dinner. But this will be no ordinary dinner. Tonight, Marge is serving the Queen of Meatloaf, “a gustatory experience altogether unlike ordinary meatloaf.” The Queen of Meatloaf emerges silently from the kitchen in bedazzled, human form. Rex is taken aback. Marge regales him with the Queen’s nutritional and nuptial benefits. They are so overcome by the Queen that they fall asleep at the table. The Queen begins to multiply, emerging in various other human forms and wreaking havoc on consumer TV sets, before disappearing with a slow buzz and a fading dot of white light on the black screen.

A “real” version of Marge and Rex proceed to have dinner. Marge looks on in disgust while Rex devours his meal. She lights a cigarette and approaches the dining room window, gazing out into the night with a new glimmer of awareness and resolve in her eye.



Aya Cash as *Marge*

Credits: Easy, You're the Worst, The Wolf of Wall Street



Will Rogers as *Rex*

Credits: A Bad Idea Gone Wrong, Bridge of Spies, Blue Bloods



Jen Harris as *The Queen of Meatloaf*

Credits: New York is Dead, Better Living Through Chemistry, Gayby

DIRECTOR, Dina Fiasconaro

Dina Fiasconaro is a Baltimore screenwriter and film director. Her feature documentary, *Moms and Meds*, is available on Amazon, and her short film, *Commercial for the Queen of Meatloaf*, was funded by the Saul Zaentz Innovation Fund in Film and Media at Johns Hopkins University. Dina recently completed a feature screenplay, *Days in the Wake*, as a resident at Dorland Mountain Arts Colony in California and Stowe Story Labs fellow. Her short films have screened at a variety of festivals, including Portland Underground, BlackStar, Sidewalk and Cucalorus, and she is a recipient of the 'Generation Next' screenwriting grant for her feature script, *Beyond the Pale*. Dina has an MFA in film directing from Columbia University, and a BS in TV, Radio and Film from Syracuse University. She is an Associate Professor of Film and Moving Image at Stevenson University, and co-founded the Baltimore Chapter of Film Fatales (www.filmfatales.org), a national organization working towards gender parity in the film industry.



EXECUTIVE PRODUCER, Leah Meyerhoff

Leah Meyerhoff is a New York based filmmaker whose debut feature film / *Believe In Unicorns* premiered in the narrative competition of SXSW 2014. Her previous short films have screened in over 200 film festivals, won a dozen awards, and aired on several cable networks. She has been shortlisted for the Gotham Awards and received high profile grants from IFP, the Tribeca Film Institute and the Adrienne Shelly Foundation.



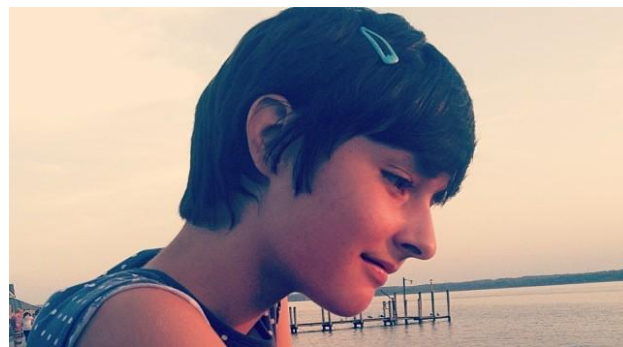
PRODUCER, Melodie Sisk

After starring in Zach Clark's *Modern Love is Automatic* (SXSW 2009), Melodie Sisk quickly found a love for producing. Since then she has produced and appeared in Clark's *Vacation!* (Edinburgh 2010) and *White Reindeer* (SXSW 2013) and is a Story Creator and Producer on Clark's newest feature *Little Sister* (SXSW 2016).



SCREENWRITER, Emilie Fendenzer

Emilie Feldenzer is a writer and student at Oberlin College. Feldenzer's writing has been recognized by Scholastic Art and Writing Awards, YoungArts, and the Jack London Writing Contest. It has also been published by Electric Cereal, Arsenic Lobster Poetry Journal, and moongarlic E-zine.



CREDITS

Directed by:

Written by:

Executive Produced by:

Produced by:

Director of Photography:

Production Designer:

Editor:

Costume Designer:

Hair & Make-up Designer:

Production Sound Recordist:

Dina Fiasconaro
Emilie Feldenzer
Leah Meyerhoff
Melodie Sisk
Shannon Palmer
Cathy C. Cook
Danielle Damico
Patty Burns
Margaret Sackman
Zach Trees

CAST

Marge:

Rex:

The Queen of Meatloaf:

Aya Cash
Will Rogers
Jenn Harris



Associate Producer:
Assistant Producer:
First Assistant Director:
Second Assistant Director:
Script Supervisor:
1st Assistant Camera:
2nd Assistant Camera:
Camera PA:
Grip:
Still Photographer:

Gaffer:

Best Boy:
Electricians:
Carpenter:
Set Builders:

Key Art:

Contact:

Social Media:

Stacie Jones Gentzler
Lucas Cullen
Stacie Jones Gentzler
Milinda Balthrop
Lucas Cullen
Aiden Gray
Kevin Marshall
Helene Ball
Doug Jones
Paul Lai
Aiden Spann
Jena Richardson
Mark Burchick
Devin McBay
Sam Teasley
Chris Crostic
Ryan Russell
Zack Fowler
Derrick Cullen

Fringe Films, LLC
917.848.0210
queenofmeatloaf@
gmail.com
@queenofmeatloaf

VFX:
Sound Design:
Foley Artist:
Colorist:
Insurance:

Legal:
Camera & Grip Equipment:

Kristen Anchor
Studio Unknown
Matt Davies
Digital Cave Media
Maury, Donnelly &
Parr
Frank Morgan, Esq.
CharmCine
DC Camera

