



MANCHA

WE HAVE FUN ENT. IN ASSOCIATION WITH LALIFF AND NETFLIX PRESENTS MANCHA

STARRING MARISÉ ÁLVAREZ, MARLENE FORTE, GLORIA LAÍNO, ELI CARO

EXECUTIVE PRODUCERS ANJELIKA WASHINGTON, YVETTE MONREAL, TYLER CORBIN, MICHAEL FISHMAN, RACHEL VALLORI

CASTING BY NICOLE MEJÍA MUSIC BY ALAIN EMILE EDITED BY COLTON WARREN PRODUCTION DESIGN BY MARINA PÉREZ CHOREOGRAPHY BY JORDI CABALLERO

CINEMATOGRAPHY BY SETH MACMILLAN PRODUCED BY NICOLE MEJÍA, DON DIPETTA, BLANCA BALLESTE, DARIA SUVOROV

WRITTEN BY NICOLE MEJÍA STORY BY DON DIPETTA, XOCHITL PORTILLO-MOODY DIRECTED BY NICOLE MEJÍA

A close-up, high-contrast photograph of a hand holding a knife, with blood splatters on a light surface. The image is dominated by a bright, almost white light source, creating a stark contrast with the dark, shadowed areas of the hand and the knife. The hand is positioned on the right side of the frame, with fingers gripping the handle of the knife. The knife itself is angled diagonally across the frame, with the blade pointing towards the bottom right. The surface of the knife and the surrounding area are covered in numerous dark, irregular splatters, suggesting a violent act. The overall mood is dark and ominous, with a strong sense of horror or suspense.

L O G L I N E

Cursed by generations of the MANCHA, Cory
must fight this dark presence to protect her
daughter from the same fate.



E X T E N D E D S Y N O P S I S

Cory and her family of women own La Playa restaurant in Anchorage, Alaska. While being haunted by her family's past trauma in a nightmare, she wakes up to reveal she is at work.

Throughout the busy evening, Cory continues to have visions of a MANCHA growing and taking over her, her family and the restaurant. She is faced with the choice to fight it so it doesn't overtake her daughter or to allow it to consume her.



DIRECTOR'S STATEMENT

When I was 6, my family moved to Alaska because my grandmother married an American man who was in the Air Force. Right out the gate, my mother hated it. Not just because nights were endless but because my father left us as soon as we came to this country. My mother fell into a deep depression that she kept buried inside and masked it by working non-stop, learning English and going to school.

I barely ever saw her and I never received much affection from her, but I know she was just trying her best to get by. It's all she ever knew. You see, my mother was a product of rape and her mother left her a few months after she was born to be cared for by my great grandmother. I grew up hearing folk tales of dangerous men lurking outside our doors. The fear amongst the women in my family was always present.

To this day, no-one talks about the fact that every woman in my family has been assaulted. With this film, I want to break the cycle of that abuse and confront the trauma that haunts us so that in the future, my daughter can have a different life.

C A S T





MARISE ALVAREZ | CORY

Born in San Juan, Puerto Rico, Marise has been working in theater, film and television for the last 15 years. Her first notable role was Neyshali in the award winning feature film 'Lovesickness' of Executive Producer Benicio Del Toro. Soon after, she played Cuban revolutionary Vilma Espin in Che: Part One and Che: Part Two directed by Steven Soderbergh. In 2013, she was nominated for Best Actress at the NBCUniversal Short Film Festival for 'Mi Corazon' directed by Marielle Woods. Most recent appearances include 'The Vessel' from EP Martin Sheen, Tanya Ibar in the Spanish mini series 'En El Corridor de la Muerte' co-starring Miguel Angel Silvestre and Leticia Ozuna in the Showtime pilot, 'Hombre' directed by Jonas Cuaron, co-starring Gael Garcia Bernal.



ELIZABETH PHOENIX CARO | LUCY

Elizabeth Phoenix Caro was born in Long Beach, CA. Elizabeth loves to entertain, so at age 5 her parents put her in acting classes at Shari Shaw Studios. She has grown up in the spotlight, attending many red carpet music events like Premios Lo Nuestro and Premios Tu Mundo with her famous father, Mexican singer Regulo Caro. She has also appeared in several TV shows with him: Gordo y la Flaca, Despierta America, Un Nuevo Dia. It didn't take long for talented Elizabeth to book her first acting job in the feature film DOG DAYS in the role of 'Amelia. DOG DAYS stars Finn Wolfhard, Nina Dobrev, Eva Longoria, and Vanessa Hudgens. In her free time she enjoys painting, drawing, and playing with her baby sister Emilia.



MARLENE FORTE | NATALIA

Marlene Forte is a Cuban American actress born just outside of Havana, Cuba, and proudly raised in North Jersey-bridge and tunnel to New York City. A founding member of Labyrinth Theater Company, she credits her career to her Labyrinth familia, where she learned her craft alongside John Ortiz, Gary Perez, David and Liza Colon-Zayas, Judy Reyes, Stephen Adly Guirgis, Sam Rockwell, Philip Hoffman, Paul and Cathy Calderon, Liza Canavan, Ron Cephas Jones, and David Deblinger. Over a twenty year career, she has consistently appeared on television, film, and stage in a wide variety of roles as well as producing films, and directing for stage and screen. But her best production to date remains her daughter Giselle Forte-Rodriguez who she credits for saving her life



GLORIA LAINO | MAMA LUCILA

Gloria Laino is best known for her role as The Mexican, an insane asylum lunatic in the FX award-winning hit drama series 'American Horror Story: Asylum' and The Baron's Familiar in 'What We Do In The Shadows.' Some recent TV credits include: Grey's Anatomy, NCIS: Los Angeles, Jane the Virgin and Goliath. Recent film credits include: All Those Small Things and Replica. She wrote and stars in 'Two Dancers One Love,' currently in post production.



F I L M M A K E R S



NICOLE MEJIA | WRITER | DIRECTOR | PRODUCER

Nicole Mejia is a Los Angeles-based director, writer and producer. She is the inaugural directing fellow for the Adelante Lab. A television shadowing fellowship created by the Latinx House in partnership with Netflix, Sundance and Shondaland.

Her first feature *A PLACE IN THE FIELD* premiered at the 2022 Santa Barbara International Film Festival. Her short film, *MANCHA* was awarded the LALIFF/Netflix Fellowship and premiered in June of 2022. Her AFI thesis film *MY LIFE STOPPED AT 15*, based on her personal story of healing from sexual abuse, won the ASC Heritage award and is shortlisted for the Young Director Award.

Originally from Honduras, she is the first in her family to hold a BFA in theater from Cornish College of the Arts as well as an MFA in Directing from the American Film Institute where she was awarded the Audi Fellowship for Women.



DON DIPETTA | PRODUCER | STORY BY

Don DiPetta is a Los Angeles based writer, producer and actor. Don's latest short film, *MANCHA*, was produced in partnership with Nicole Mejia & Netflix which premiered at LALIFF 2022. His first feature, *A PLACE IN THE FIELD*, in which he wrote, produced and starred, premiered at the SBIFF and has found distribution with a major studio.

He is currently in development on a number of projects. Don has also recently recurred in the Starz mini-series, *GASLIT*. He will be seen in the upcoming Sony picture, *LYLE LYLE CROCODILE*, the Hillman Grad feature, *A THOUSAND AND ONE*, and the new Peacock pilot *THE MISSING*.



SETH MACMILLAN | CINEMATOGRAPHER

Seth is from Takoma Park, Maryland. He picked up his first camera in middle school and hasn't stopped photographing since. He studied international politics and Spanish at Princeton University, where he also played soccer. However, it was the study of Spanish and Latin American cinema in classes that sparked his curiosity and love for film.

Since graduating from Princeton, Seth has worked in the film industry in San Francisco and New York, shooting and directing short films, music videos, commercials, and live television. He has just graduated from the American Film Institute Conservatory MFA program in Cinematography. He is interested in films that investigate the psychological state of characters through an exploration of emotion and physical space, light and shadow.



BLANCA BALLESTE | PRODUCER

Blanca Ballesté is a producer born and raised in Barcelona. After earning a BFA in TV and Film in her hometown, she started producing for advertising and fashion. She has worked for most international agencies, like McCann Erickson, DDB, Leo Burnett or Ogilvy & Mather, and online platforms such as Nowness or Vogue. She received her MFA in Producing from the American Film Institute.



MARINA PEREZ | PRODUCTION DESIGNER

Marina Perez Ramirez is a Spanish Production Designer who graduated from Pompeu Fabra University in Barcelona majoring in Film and Visual Communication. In 2015 she was awarded with a fellowship to finish her studies at UCLA. After completing a year abroad at UCLA, she moved back to Barcelona where she worked in various art departments.

She has been working as a production designer since 2016, combining projects between Film, Music Videos, and Fashion Commercials. She designed a short film SUC DE SINDRIA ((WATERMELON JUICE)) for director Irene Moray which was the winner of the 2020 Goya Award (Spanish Academy Award) for Best Fictional Short Film. She is interested in designing spaces where the intersection of cultures is shaped through color, texture, and form from the architecture to the small objects. Thanks to La Caixa scholarship Foundation she graduated with an MFA in Production Design from The American Film Institute. She is currently living and working in Los Angeles combining narrative projects with commercials for brands like New Balance, Maison Kitsune and Gymshark.



COLTON WARREN | EDITOR

Colton Warren holds a BA in Film and Media Studies from the University of Oklahoma and an MFA in Editing from the American Film Institute.

His editing credits encompass a wide range of narrative shorts, features, and documentaries, including the Emmy winning environmental film, I STAND: THE GUARDIANS OF THE WATER. His two recent features, 'A PLACE IN THE FIELD' directed by Nicole Mejia and OUT OF EXILE, with Peter Greene and Ryan Merriman, are set to be released later this year.



ALAIN EMILE | COMPOSER

Alain Emile is a multi-instrumentalist composer from Puerto Rico based in Los Angeles, CA. His minimalistic composition approach incorporates organic tones and sound design techniques to achieve a distinctive sonic brand for every project.

He has composed for films that have premiered at national and international film festivals, including 'The Kobal Report' by Javier Bartolozzi, an Official Selection of the 2017 Festival de Cannes Short Film Corner. He recently scored the feature film 'A Place in The Field' directed by Nicole Mejia and Rance Randle's Documentary 'Young Bucks' which focuses on the Bill Pickett Rodeo. Currently he is working on 'MANCHA.' A short film by Nicole Mejia participating in the 2022 LALIFF Inclusion Fellowship, presented by Netflix.

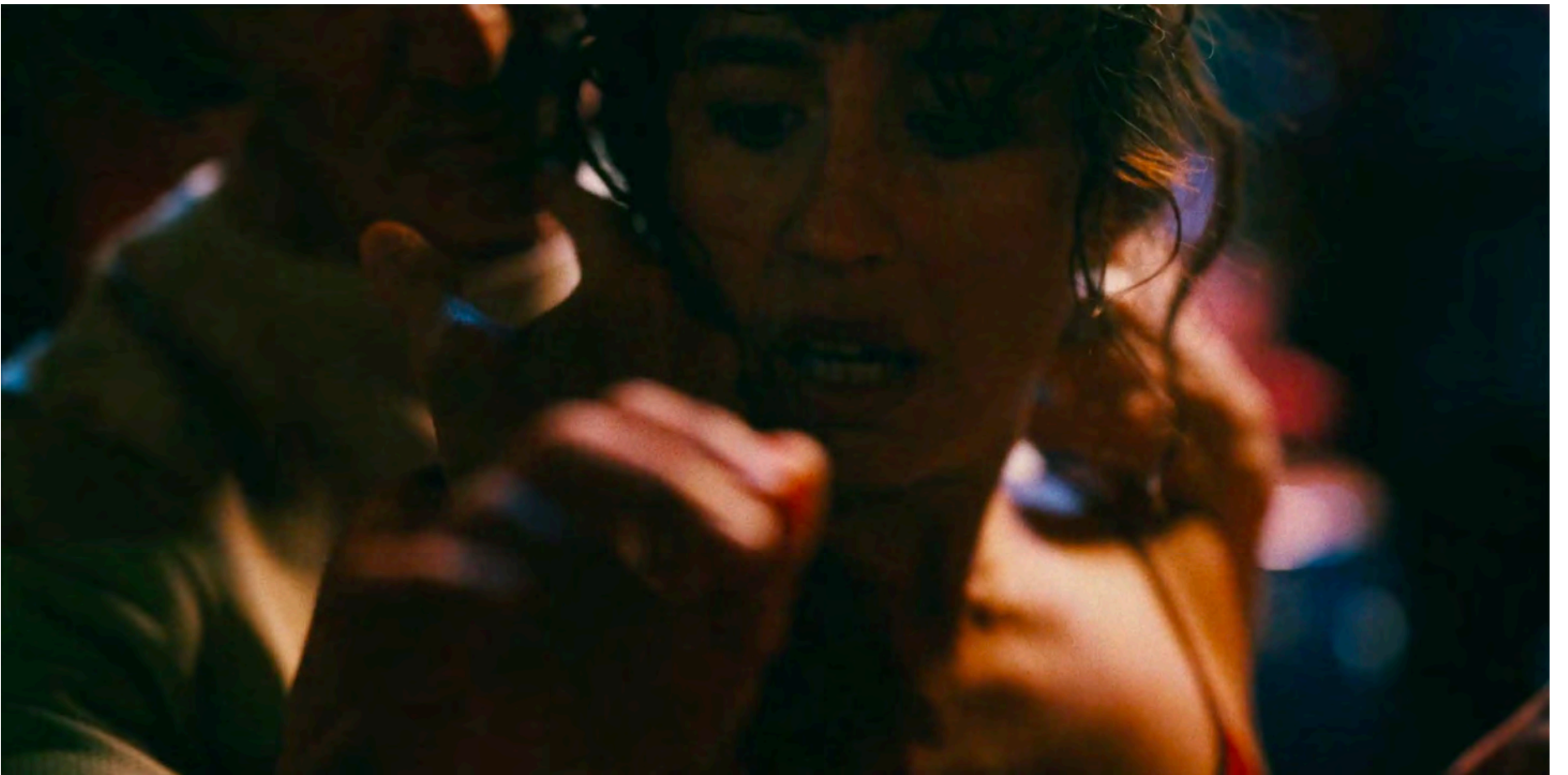
Alain also releases music independently under the moniker Pablo Swiss. His debut album was listed as one of Bandcamps best ambient releases of that year.

A blurred background image showing a person's hands holding a bowl of food. The food appears to be a salad or a dish with green and orange ingredients. The word "STILLS" is overlaid in the center in a white, serif font.

S T I L L S







CAST LIST

CORY PEREZZ
NATALIA
MAMA LUCILA
LUCY
HENRY / MAN AT BAR)
MAN IN DREAM
ESTEBAN / BARTENDER
BAND MEMBERS

MARISE ALVAREZ
MARLENE FORTE
GLORIA LAINO
ELIZABETH PHOENIX CARO
DANNY FEHSENFELD
JORDI CABALLERO
CURLY VELASQUEZZ
PABLO BAEZ
EARL MIRANDA
HENRY MIRANDA
RIC 'MIGHTYBONE' FELICIANO
OSKAR 'PAPO' MARTINEZ'Z
RICHARD REYES

STORY BY

NICOLE MEJIA, DON DIPETTA & XOCHITL PORTILLO-MOODY

EXECUTIVE PRODUCERS

ANJELIKA WASHINGTON, YVETTE MONREAL, CINTHYA CARMONA, DON
DIPETTA MICHAEL FISHMAN, TYLER CORBIN, RACHELL VALLORI,
NETFLIX

IN PARTNERSHIP WITH LALIFF

A person wearing a dark winter coat and boots stands in a snowy, mountainous landscape at night. They are holding a large, white rectangular board or screen. The scene is illuminated by a warm, yellowish light, possibly from a fire or a lamp, creating a contrast with the dark blue night sky and the white snow. In the background, there are dark, silhouetted mountains and a small, glowing green light source in the upper left corner.

C O N T A C T

Producer | Director |

Nicole Mejia

nikki.r.mejia@gmail.com

Producer |

Don DiPetta

dondipetta7@gmail.com