



In the Gray

DIGITAL PRESS KIT

STORY

When a Christian woman finds herself pregnant with what will be her sixth child, she decides to end the pregnancy and must confront the weight and judgments of her own beliefs.



Set in North Carolina, *In the Gray* follows the story of Tami, a 33-year-old wife of a pastor, who becomes pregnant with what would be her sixth child. Already relying on her eldest child to keep the house running, Tami realizes that another baby would be an impossible burden.

With despair and the courage of her newfound convictions, Tami makes the long and lonely drive to a clinic in order to terminate her pregnancy. Once inside, the fear and guilt overwhelm her and it is only through the strength and compassion of the other women that Tami is able to calm down, and for once in her life make a decision totally for herself.

CAST



Emily Rhoads
"TAMI"



Joy Cooper
"JOSS"



Nicole Stubbs
"DENISE"



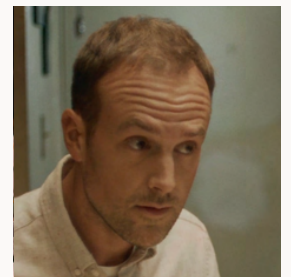
Allison Walsh
"KELSEY"



Meera Ray
"MEGHAN"



Chris Quintos
"DR. QUINTOS"



James Bobo
"KEVIN"

TEAM

Alexandra Hensley

WRITER & DIRECTOR

Alexandra Hensley is a writer-director based in Los Angeles. A former Rifle and Pistol Coach in the Marine Corps, Alexandra tells stories that challenge stereotypes and create pathways for actionable change. She strongly believes that women must be given a shot to lead films, and aspires for her projects to provide those opportunities.

Alexandra's award-winning script *Sluagh* was a 2022 Austin Film Festival second round selection and is currently in contention at Screencraft. She holds two BA degrees from the University of Southern California and an MFA in Screenwriting from Full Sail University. She is graduating from the University of Southern California's Peter Stark Producing Program in May 2023.



Kelan Brown

PRODUCER

Kelan Brown is a Canadian-born writer/producer whose work explores the dark sides of women. While at Powerhouse Theater, a co-production between Vassar College and New York Stage & Film, Kelan produced the world premiere of John Patrick Shanley's 'Danish Widow'.

Kelan is based in Los Angeles, about to graduate with her MFA from the Peter Stark Producing Program at USC's School of Cinematic Arts. She holds a BFA in Performance Acting from Toronto Metropolitan University and a Creative Writing Certification from Wesleyan University.

Tricha Kumar

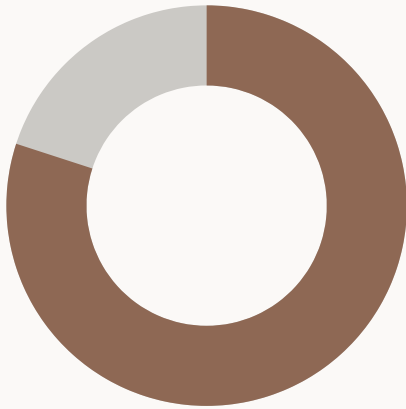
PRODUCER

Tricha is a producer, choreographer, and cultural activist based in Los Angeles, California. With a cumulative 17 years of experience in front and behind the camera, Tricha has worked with Disney, *Dancing with the Stars*, Madhuri Dixit, and Yash Raj Films. In 2020, she was part of MBS Studios' inaugural Illumination Training program.

An alumnus of Georgetown University and Florida State University, Tricha currently attends the Peter Stark Producing Program at USC and has worked with Shondaland and UTA. She is professionally trained in 9 dance styles and rides unicycles for fun.

CREW

Across production and post, 33 of our 41 team members identify as a woman or non-binary individual.



81%

WOMEN &
NONBINARY INDIVIDUALS

We prioritized telling this story from the female gaze and wanted to create opportunities for marginalized individuals who work in film, which is a male-dominated field with glass ceilings and low visibility.

As Director Prince-Bythewood said, “Often the resumes are not long because it’s about lack of opportunity, not lack of talent.” To this end, every department head on *In the Gray* is part of a community that we want to empower.



Gaffer Taylor Balfour lights the sound stage



DP 'Fox' Piantoni adjusts the ARRI Alexa Mini LF



2nd AC Tiffany Damon slates an exterior shot

OUR MISSION

In the Gray isn't the standard narrative that you'd expect to see about abortion. Our story represents the undiscussed majority of women who have the procedure: *Mothers*.



60% of abortions are obtained by women who already have children, and half of those who seek abortions live below the poverty line (source: Guttmacher Institute).

By deviating from the “norm” of who we expect to see at the center of the abortion narrative, we explore how our beliefs and our actions are shaped by the circumstances we're born into.

"We want the audience to empathize with Tami even if they're not inclined to like her."

~ Director Alexandra Hensley

When we began working on *In the Gray* in early 2022, we could not have predicted how the changing political and social landscape would make this film more relevant and necessary with each passing week – in fact, a panel of industry experts awarded us a prestigious production grant just two weeks before *Roe v. Wade* was struck down.

In The Gray contains an important, unfortunately timely message that is positioned on the bridge between two sides of a very contentious social, legal, and emotional issue. We believe in the power of empathy and its ability to change the way people think, and this project is our way of fighting back.

CONTACT US

<https://www.inthegrayshortfilm.com/>

inthegray.short@gmail.com

